

Product Information Crawler Excavator

R 930

Litronic®

**Generation**

8

Engine

180 kW / 245 HP

Non-regulated only for select markets

Operating Weight

30,400 – 31,450 kg

Bucket Capacity

1.00 – 2.15 m³

LIEBHERR

Experience the Progress

R 930

Safety

- Panoramic visibility with no obstructions and camera on the rear and the right side for enhanced safety
- Tilttable console for easy and safe access to cab
- Emergency exit via the rear cab window
- Right window and windshield in laminated and tinted glass

Equipment

- Large choice of sticks
- Longer lifespan of components thanks to a grouping of the lubrication points
- Safety check valves for hoist and stick cylinders (option)

Maintenance

- Innovative servicing concept, with service points accessible from ground level
- Engine oil, hydraulic oil, fuel and urea (diesel exhaust fluid) levels visible on the display





Comfort

- Spacious, air-conditioned work space
- Mechanical seat with vertical suspension as standard
- Easy-to-use high resolution 7" colour touchscreen
- Completely retractable front cab window
- New LED lighting as standard

Engine

- New Liebherr engine without EGR valve, diesel oxidation catalyst and diesel particulate filter
- Automatic engine idling / speed increase, controlled via joystick sensors

Undercarriage

- Robust, reliable X-frame undercarriage, easy to secure thanks to its integrated eyelets
- Easy maintenance
- Maintenance-free track chains and track rollers with lifetime lubrication

Technical Data



Engine

Rating per ISO 9249	180 kW (245 HP) at 1,800 RPM
Torque	1,255 Nm at 1,350 RPM
Model	Liebherr D934 A7-20
Type	4 cylinder in-line
Bore	122 mm
Stroke	150 mm
Displacement	7.0 l
Engine operation	4-stroke diesel Common-Rail Turbo-charged and after-cooler
Exhaust gas treatment	Engine non-regulated: without EGR
Cooling system	Water-cooled and oil cooler, after-cooled and fuel cooled
Air cleaner	Dry-type air cleaner with pre-cleaner
Fuel tank	620 l
Electrical system	
Voltage	24 V
Batteries	2 x 135 Ah / 12 V
Alternator	Three-phase current 24 V / 140 A
Engine idling	Sensor controlled



Hydraulic Controls

Power distribution	Via control valves, simultaneous and independent actuation of undercarriage, swing drive and equipment
Electric servo circuit	Electro-hydraulic control
Equipment and swing	Proportional via joystick levers
Travel	– Proportional control via foot pedals or removable levers – Automatic or manual speed adjustment
Additional functions	Proportional regulation via foot pedals or mini-joystick



Hydraulic System

Hydraulic system	Positive Control hydraulic system. Demand-based, double independent pump flows Features high system dynamics and sensitivity provided by integrated system controlling Independent circuit for rotation
Hydraulic pumps	
For equipment and travel drive	Liebherr, variable displacement, swashplate double pump
Max. flow	2 x 265 l/min.
Max. pressure	380 bar
For swing drive	Swashplate pump, closed-loop circuit
Max. flow	200 l/min.
Max. pressure	400 bar
Pump management	Electronic management synchronous to the control block
Hydraulic tank	239 l
Hydraulic system	max. 475 l
Hydraulic oil filter	1 main return filter with integrated partial micro filtration (10 µm)
Cooling system	Compact cooler, consisting of a water cooler, with hydraulic oil cooler, gearbox oil cooler, fuel cooler and after-cooler cores and hydrostatically driven fan
MODE selection	Adjustment of engine and hydraulic performance via a mode pre-selector to match application, e.g. for especially economical and environmentally friendly operation or for maximum digging performance and heavy-duty jobs
Engine speed and performance setting	Stepless adjustment of engine output and hydraulic power via engine speed



Swing Drive

Drive	Liebherr swashplate motor with integrated brake valve and torque control
Transmission	Liebherr compact planetary reduction gears
Swing ring	Liebherr, sealed race ball bearing swing ring, internal teeth
Swing speed	0 – 10.1 RPM stepless
Swing torque	99 kNm
Holding brake	Wet multi-disc (spring applied, pressure released)



Operator's Cab

Cab	ROPS safety cab structure optional (roll-over protection system according to ISO 12117-2:2008) with windscreen, totally or partially retractable (only upper part), under cab roof, LED work headlights integrated in the ceiling, a door with a sliding window (can be opened on both sides), large storing box and several stowing possibilities, shock-absorbing suspension, laminated right hand side and roof windows, all windows tinted, separate extensible window shades for the sunroof window and windscreen, cigarette lighter and 24 V plug, cup holder, mobile phone storage net
Operator's seat	Liebherr-Comfort seat, airsprung with automatic weight adjustment, vertical and longitudinal seat damping including consoles and joysticks. Seat and armrests adjustable separately and in combination (adjustable in width, height and inclination), seat heating as standard
Arm consoles	Oscillating consoles with seat, tiltable console left
Operation and displays	Large high-resolution operating unit, intuitive, colour display with touchscreen, video-compatible, numerous setting, control and monitoring options, e.g. air conditioning control, fuel consumption, machine and attachment parameters
Air-conditioning	Automatic air-conditioning, recirculated air function, fast de-icing and demisting at the press of a button, air vents can be operated via a menu. Recirculated air and fresh air filters can be easily replaced and are accessible from the outside. Heating-cooling unit, designed for extreme outside temperatures, sensors for solar radiation, inside and outside temperatures
Noise emission	
ISO 6396	L_{pA} (inside cab) = 80 dB(A)
2000/14/EC	L_{WA} (surround noise) = 106 dB(A)



Undercarriage

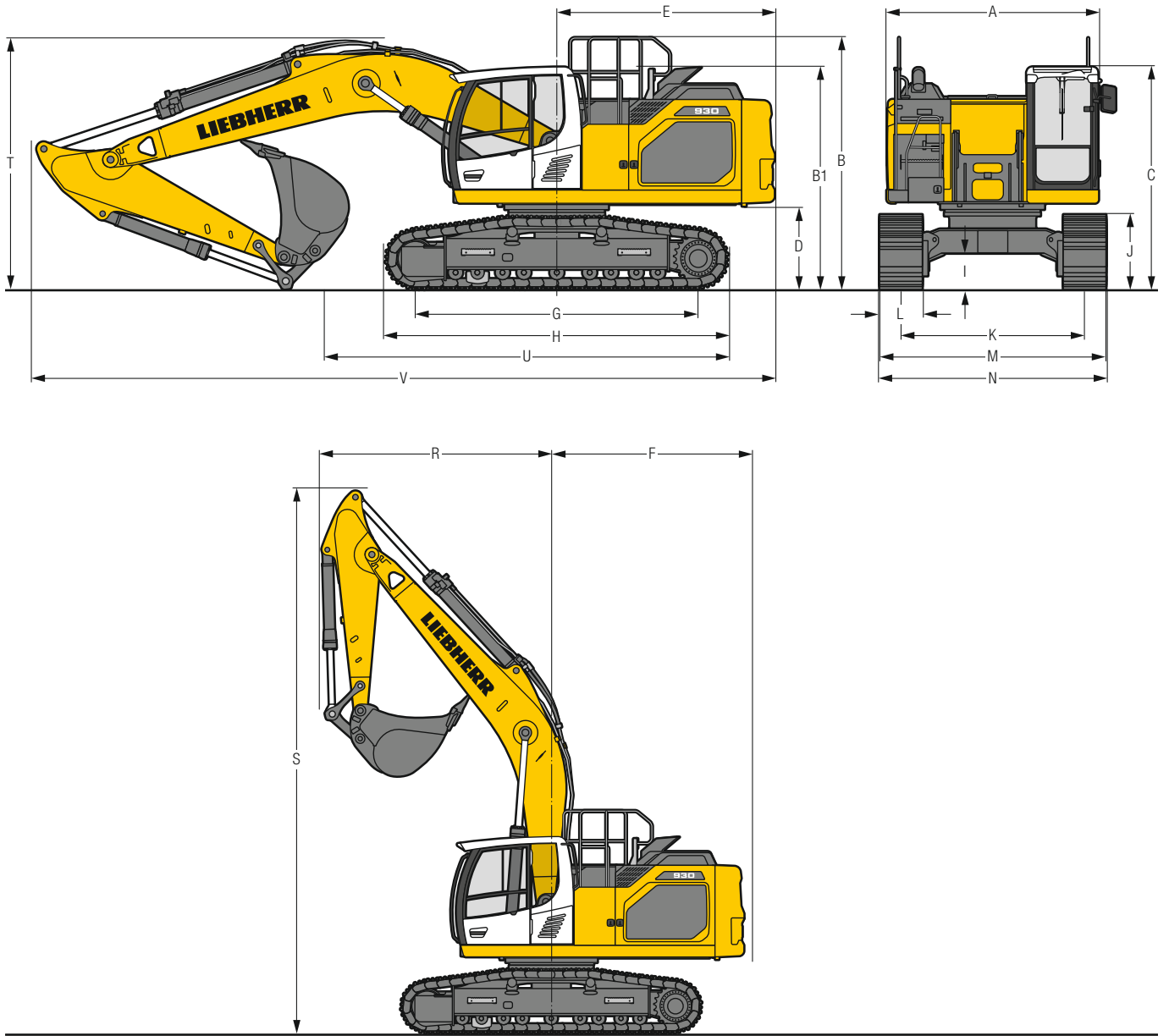
LC	Gauge 2,590 mm
Drive	Liebherr swashplate motor with brake valves on both sides
Transmission	Liebherr planetary reduction gear
Maximum travel speed	Low range 3.5 km/h High range 5.8 km/h
Drawbar pull on crawler	261 kN
Track components	D7, D7G, maintenance-free
Track rollers / Carrier rollers	9/2
Tracks	Sealed and greased
Track pads	Triple grouser
Holding brake	Wet multi-disc (spring applied, pressure released)
Brake valves	Integrated into travel motor
Lashing eyes	Integrated



Equipment

Type	Combination of resistant steel plates and cast steel components
Hydraulic cylinders	Liebherr cylinders with seal and guidance systems
Bearings	Sealed, low maintenance
Lubrication	Liebherr central lubrication system
Hydraulic connections	Pipes and hoses equipped with SAE split-flange connections
Buckets	Standard equipped with Liebherr tooth system

Dimensions



		LC				mm
A	Uppercarriage width					2,990**
B	Uppercarriage height					2,910
B1	Uppercarriage height (handrails folded)					3,130
C	Cab height					3,150
D	Counterweight ground clearance					1,175
E	Rear-end length					3,075
F	Tail swing radius					3,200
G	Wheelbase					3,990
H	Undercarriage length					4,840
I	Undercarriage ground clearance					505
J	Track height					1,055
K	Track gauge					2,590
L	Track pad width	600	700	800	900	
M	Width over tracks	3,190	3,290	3,390	3,490	
N	Width over steps	3,190	3,190	3,390*	3,390*	

* width with removable steps

** without door stop device and spacer

		Stick length m	Mono boom 6.20 m direct mounting mm
R	Front swing radius	2.50	3,700
		2.80	3,700
		3.20	3,700
		3.70	3,700
S	Height with boom up		8,700
T	Boom height	2.50	3,250
		2.80	3,550
		3.20	3,400
		3.70	3,200*
U	Length on ground	2.50	6,400
		2.80	6,250
		3.20	5,600
		3.70	4,850*
V	Overall length	2.50	10,400
		2.80	10,400
		3.20	10,400
		3.70	10,400*
	Bucket		1.75 m ³

* without bucket

Transport Dimensions

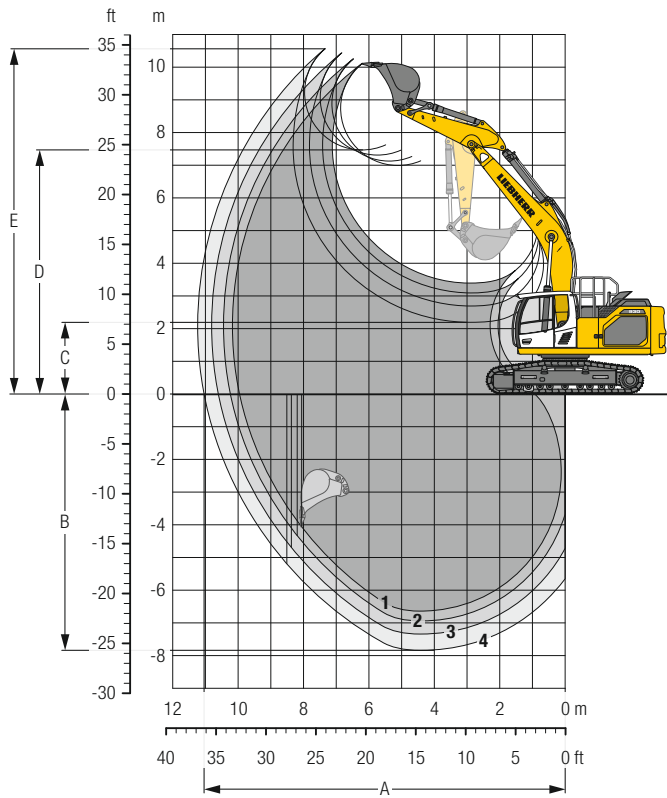
removable elements disassembled

		Stick m	Mono boom 6.20 m mm			
	Pad width		600	700	800	900
	Transport width		3,190	3,290	3,390	3,490
	Transport length	2.50	10,400			
		2.80	10,400			
		3.20	10,400			
		3.70	10,400*			
	Transport height	2.50	3,250			
		2.80	3,550			
		3.20	3,400			
		3.70	3,200*			
	Bucket		1.75 m ³			

* without bucket

Backhoe Bucket

with Mono Boom 6.20 m and Counterweight 5.1 t



Digging Envelope

without quick coupler		1	2	3	4
Stick length	m	2.50	2.80	3.20	3.70
A Max. reach at ground level	m	9.95	10.23	10.60	11.04
B Max. digging depth	m	6.64	6.94	7.34	7.84
C Min. dumping height	m	3.39	3.09	2.69	2.19
D Max. dumping height	m	6.99	7.13	7.31	7.47
E Max. cutting height	m	10.10	10.23	10.42	10.56

Forces

without quick coupler		1	2	3	4
Stick digging force (ISO 6015)	kN	168	156	142	128
Bucket digging force (ISO 6015)	kN	204	204	204	204
Stick digging force (SAE J1179)	kN	160	149	136	123
Bucket digging force (SAE J1179)	kN	178	178	178	178

Operating Weight and Ground Pressure

The operating weight includes the basic machine with counterweight 5.1 t, mono boom 6.20 m, stick 3.20 m and bucket 1.75 m³ (1,160 kg).

Undercarriage		LC			
Pad width	mm	600	700	800	900
Weight	kg	30,400	30,750	31,100	31,450
Ground pressure	kg/cm ²	0.59	0.51	0.45	0.41

Optional: counterweight 6.2 t
 (counterweight 6.2 t increases the operating weight by 1,100 kg and ground pressure by 0.02 kg/m²)
 see load tables on page 11

Buckets Machine stability per ISO 10567* (75% of tipping capacity)

				LC-Undercarriage (with track pads 600 mm)								
Cutting width mm	Capacity ISO 7451 m ³	Weight ³⁾ kg	Weight ⁴⁾ kg	Stick length (m)								
				without quick coupler				with quick coupler				
				2.50	2.80	3.20	3.70	2.50	2.80	3.20	3.70	
with counterweight 5.1 t												
STD ¹⁾	1,050	1.00	870	930	▲	▲	▲	▲	▲	▲	▲	▲
	1,250	1.25	1,000	1,050	▲	▲	▲	▲	▲	▲	▲	▲
	1,400	1.45	1,070	1,130	▲	▲	▲	▲	▲	▲	▲	▲
	1,550	1.60	1,110	1,170	▲	▲	▲	■	▲	▲	■	▲
	1,650	1.75	1,160	1,220	▲	▲	■	▲	▲	■	▲	■
	1,550	1.85	1,170	1,230	▲	■	▲	■	■	■	▲	△
	1,650	2.00	1,210	1,270	■	▲	■	△	■	▲	■	△
	1,750	2.15	1,260	1,320	▲	■	△	△	▲	■	△	△
HD ²⁾	1,050	1.00	1,000	1,050	▲	▲	▲	▲	▲	▲	▲	▲
	1,250	1.25	1,140	1,200	▲	▲	▲	▲	▲	▲	▲	▲
	1,400	1.45	1,230	1,290	▲	▲	▲	▲	▲	▲	▲	■
	1,550	1.60	1,290	1,350	▲	▲	■	▲	▲	▲	■	■
	1,650	1.75	1,350	1,410	▲	■	▲	■	▲	■	▲	△
	1,550	1.85	1,340	1,400	▲	■	▲	■	■	▲	■	△
	1,650	2.00	1,400	1,460	■	▲	■	△	▲	■	△	△
	1,750	2.15	1,450	1,510	▲	■	△	△	■	△	△	-
with counterweight 6.2 t												
STD ¹⁾	1,050	1.00	870	930	▲	▲	▲	▲	▲	▲	▲	▲
	1,250	1.25	1,000	1,050	▲	▲	▲	▲	▲	▲	▲	▲
	1,400	1.45	1,070	1,130	▲	▲	▲	▲	▲	▲	▲	▲
	1,550	1.60	1,110	1,170	▲	▲	▲	▲	▲	▲	▲	▲
	1,650	1.75	1,160	1,220	▲	▲	▲	■	▲	▲	▲	■
	1,550	1.85	1,170	1,230	▲	▲	▲	■	▲	▲	■	▲
	1,650	2.00	1,210	1,270	▲	▲	■	▲	▲	■	▲	■
	1,750	2.15	1,260	1,320	▲	■	▲	■	■	▲	■	△
HD ²⁾	1,050	1.00	1,000	1,050	▲	▲	▲	▲	▲	▲	▲	▲
	1,250	1.25	1,140	1,200	▲	▲	▲	▲	▲	▲	▲	▲
	1,400	1.45	1,230	1,290	▲	▲	▲	▲	▲	▲	▲	▲
	1,550	1.60	1,290	1,350	▲	▲	▲	▲	▲	▲	▲	■
	1,650	1.75	1,350	1,410	▲	▲	▲	■	▲	▲	■	▲
	1,550	1.85	1,340	1,400	▲	▲	■	▲	▲	▲	■	▲
	1,650	2.00	1,400	1,460	▲	■	▲	■	▲	■	▲	■
	1,750	2.15	1,450	1,510	■	■	▲	△	■	▲	■	△

* Indicated loads are based on ISO 10567, at maximum reach, and may be swung 360° on firm and even ground

¹⁾ Standard bucket with teeth Z 50

²⁾ HD bucket with teeth Z 50

³⁾ Bucket for direct mounting

⁴⁾ Bucket for mounting to quick coupler

Other buckets available upon request

Max. material weight ▲ = ≤ 2.0 t/m³, ■ = ≤ 1.8 t/m³, ▲ = ≤ 1.65 t/m³, ■ = ≤ 1.5 t/m³, △ = ≤ 1.2 t/m³, - = not authorised

Lift Capacities

with Mono Boom 6.20 m, Counterweight 5.1 t and Track Pads 600 mm

Stick 2.50 m

Under-carriage	m	3.0 m		4.5 m		6.0 m		7.5 m		9.0 m		m		
		↕	↔	↕	↔	↕	↔	↕	↔	↕	↔			
LC	9.0													
	7.5													
	6.0					8.0	9.0*					7.1	8.3*	6.4
	4.5					7.9	9.3*					5.6	8.1*	7.5
	3.0			11.6	12.8*	7.5	10.2*	5.4	8.1			4.8	7.2	8.1
	1.5			10.7	15.3*	7.1	11.2	5.2	7.9			4.4	6.7	8.4
	0			10.1	16.5*	6.8	10.8	5.0	7.7			4.3	6.6	8.4
	-1.5	13.0*	13.0*	10.0	15.0*	6.6	10.6	4.9	7.6			4.4	6.8	8.2
	-3.0	15.9*	15.9*	10.2	12.8*	6.7	9.9*					4.9	7.5	7.6
	-4.5			8.7*	8.7*							5.9	8.5*	6.7
-6.0											7.4*	7.4*	5.2	

Stick 2.80 m

Under-carriage	m	3.0 m		4.5 m		6.0 m		7.5 m		9.0 m		m			
		↕	↔	↕	↔	↕	↔	↕	↔	↕	↔				
LC	9.0														
	7.5														
	6.0							8.1	8.5*						
	4.5					7.9	8.9*	5.5	8.2*			6.6	7.3*	6.8	
	3.0			18.5*	18.5*	11.7	12.2*	7.6	9.8*	5.4	8.1		4.5	6.8	8.4
	1.5					10.8	14.7*	7.2	11.0*	5.2	7.9		4.2	6.4	8.6
	0					10.1	16.2*	6.8	10.8	5.0	7.7		4.1	6.2	8.7
	-1.5	12.5*	12.5*	9.9	15.3*	6.6	10.6	4.9	7.6			4.2	6.4	8.4	
	-3.0	17.1*	17.1*	10.0	13.4*	6.5	10.5	4.9	7.6			4.6	7.0	7.9	
	-4.5	12.1*	12.1*	9.7*	9.7*	6.6	10.3*					5.4	8.3*	7.0	
-6.0											7.6*	7.6*	5.6		

Stick 3.20 m

Under-carriage	m	3.0 m		4.5 m		6.0 m		7.5 m		9.0 m		m		
		↕	↔	↕	↔	↕	↔	↕	↔	↕	↔			
LC	9.0											6.9*	6.9*	5.8
	7.5											5.9	6.3*	7.2
	6.0					8.0	8.4*	5.6	7.8*			4.8	6.1*	8.2
	4.5					7.6	9.3*	5.4	8.2			4.2	6.2*	8.7
	3.0			11.4*	11.4*	7.2	10.5*	5.2	7.9	3.9	6.0	3.9	6.0	9.0
	1.5			10.2	15.8*	6.8	10.8	5.0	7.7	3.8	5.9	3.8	5.8	9.0
	0	6.5*	6.5*	9.8	16.3*	6.6	10.5	4.8	7.5			3.9	6.0	8.8
	-1.5	12.0*	12.0*	9.8	15.7*	6.5	10.4	4.8	7.5			4.2	6.5	8.3
	-3.0	18.6*	18.6*	9.9	14.0*	6.5	10.5					4.9	7.6	7.5
	-4.5	14.0*	14.0*	10.2	10.9*	6.7	8.0*					6.5	7.6*	6.2
-6.0														

Stick 3.70 m

Under-carriage	m	3.0 m		4.5 m		6.0 m		7.5 m		9.0 m		m		
		↕	↔	↕	↔	↕	↔	↕	↔	↕	↔			
LC	9.0											5.7*	5.7*	6.5
	7.5							5.7	6.0*			5.3*	5.3*	7.8
	6.0							5.6	7.3*			4.4	5.1*	8.6
	4.5							7.7	8.7*	5.5	7.8*	4.0	5.9*	9.2
	3.0	11.4*	11.4*	11.2	13.1*	7.3	10.0*	5.2	8.0	3.9	6.0	3.6	5.4*	9.4
	1.5			10.3	15.3*	6.8	10.9	5.0	7.7	3.8	5.8	3.5	5.4	9.5
	0	7.6*	7.6*	9.9	16.2*	6.5	10.5	4.8	7.5	3.7	5.8	3.6	5.5	9.2
	-1.5	11.6*	11.6*	9.7	15.9*	6.4	10.3	4.7	7.4			3.8	5.9	8.8
	-3.0	17.0*	17.0*	9.7	14.6*	6.4	10.3	4.7	7.4			4.4	6.8	8.0
	-4.5	16.1*	16.1*	10.0	12.1*	6.5	9.1*					5.6	7.6*	6.8
-6.0			7.1*	7.1*							6.5*	6.5*	4.9	

↕ Height ↔ Can be slewed through 360° In longitudinal position of undercarriage Max. reach * Limited by hydr. capacity

The load values are quoted in tons (t) at stick end (without bucket), and may be swung 360° on firm and even ground. Adjacent values are valid for the undercarriage when in the longitudinal position. Capacities are valid for 600 mm wide track pads. Indicated loads are based on ISO 10567 standard and do not exceed 75% of tipping or 87% of hydraulic capacity (indicated via *). Without bucket cylinder, link and lever the lift capacities will increase by 410 kg. Lifting capacity of the excavator is limited by machine stability and hydraulic capacity.

According to European Standard, EN 474-5: In the European Union excavators have to be equipped with an overload warning device, a load diagram and automatic safety check valves on hoist cylinders and stick cylinder(s), when they are used for lifting operations which require the use of lifting accessories.

Lift Capacities

with Mono Boom 6.20 m, Counterweight 6.2 t and Track Pads 600 mm

Stick 2.50 m

Under-carriage	m	3.0 m		4.5 m		6.0 m		7.5 m		9.0 m		m		
		↕	↔	↕	↔	↕	↔	↕	↔	↕	↔			
LC	9.0													
	7.5													
	6.0					8.8	9.0*					7.8	8.3*	6.4
	4.5					8.6	9.3*					6.1	8.1*	7.5
	3.0			12.7	12.8*	8.3	10.2*	6.0	8.8*			5.3	7.9	8.1
	1.5			11.8	15.3*	7.9	11.2*	5.8	8.6			4.9	7.3	8.4
	0			11.2	16.5*	7.6	11.8	5.6	8.5			4.8	7.2	8.4
	-1.5	13.0*	13.0*	11.1	15.0*	7.4	11.5	5.5	8.3			4.9	7.4	8.2
	-3.0	15.9*	15.9*	11.3	12.8*	7.5	9.9*					5.4	8.2	7.6
	-4.5			8.7*	8.7*							6.5	8.5*	6.7
-6.0											7.4*	7.4*	5.2	

Stick 2.80 m

Under-carriage	m	3.0 m		4.5 m		6.0 m		7.5 m		9.0 m		m				
		↕	↔	↕	↔	↕	↔	↕	↔	↕	↔					
LC	9.0															
	7.5															
	6.0							8.5*	8.5*							
	4.5							8.7	8.9*	6.1	8.2*			5.8	7.1*	6.8
	3.0			18.5*	18.5*	12.2*	12.2*	8.3	9.8*	6.0	8.6*			5.0	7.2*	8.4
	1.5					11.9	14.7*	7.9	11.0*	5.8	8.6			4.7	7.0	8.6
	0					11.3	16.2*	7.6	11.8	5.6	8.4			4.6	6.8	8.7
	-1.5	12.5*	12.5*	11.0	15.3*	7.3	11.5	5.4	8.3					4.7	7.0	8.4
	-3.0	17.1*	17.1*	11.1	13.4*	7.4	10.3*							5.1	7.7	7.9
	-4.5			12.1*	12.1*	9.7*	9.7*							6.0	8.3*	7.0
-6.0													7.6*	7.6*	5.6	

Stick 3.20 m

Under-carriage	m	3.0 m		4.5 m		6.0 m		7.5 m		9.0 m		m		
		↕	↔	↕	↔	↕	↔	↕	↔	↕	↔			
LC	9.0											6.9*	6.9*	5.8
	7.5											6.3*	6.3*	7.2
	6.0					8.4*	8.4*	6.1	7.8*			5.3	6.1*	8.2
	4.5					8.4	9.3*	6.0	8.2*			4.7	6.2*	8.7
	3.0			11.4*	11.4*	8.4	10.5*	5.8	8.6	4.4	6.5*	4.4	6.4*	9.0
	1.5			11.3	15.8*	7.6	11.6*	5.6	8.4	4.3	6.4	4.3	6.4	9.0
	0	6.5*	6.5*	11.0	16.3*	7.3	11.5	5.4	8.2			4.4	6.6	8.8
	-1.5	12.0*	12.0*	10.9	15.7*	7.2	11.4	5.3	8.2			4.7	7.1	8.3
	-3.0	18.6*	18.6*	11.0	14.0*	7.3	10.7*					5.5	8.0*	7.5
	-4.5	14.0*	14.0*	10.9*	10.9*	7.5	8.0*					7.2	7.6*	6.2
-6.0														

Stick 3.70 m

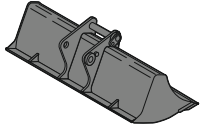
Under-carriage	m	3.0 m		4.5 m		6.0 m		7.5 m		9.0 m		m				
		↕	↔	↕	↔	↕	↔	↕	↔	↕	↔					
LC	9.0											5.7*	5.7*	6.5		
	7.5							6.0*	6.0*					5.3*	5.3*	7.8
	6.0							6.2	7.3*					4.9	5.1*	8.6
	4.5							8.5	8.7*	6.0	7.8*	4.5	5.9*	4.3	5.2*	9.2
	3.0			11.4*	11.4*	12.3	13.1*	8.0	10.0*	5.8	8.4*	4.4	6.5	4.1	5.4*	9.4
	1.5					11.4	15.3*	7.6	11.2*	5.5	8.4	4.3	6.4	4.0	5.8*	9.5
	0	7.6*	7.6*	11.0	16.2*	7.3	11.5	5.4	8.2	4.2	6.3	4.0	6.1	4.0	6.1	9.2
	-1.5	11.6*	11.6*	10.8	15.9*	7.1	11.3	5.3	8.1					4.3	6.5	8.8
	-3.0	17.0*	17.0*	10.8	14.6*	7.1	11.1*	5.3	8.1					4.9	7.5	8.0
	-4.5	16.1*	16.1*	11.1	12.1*	7.3	9.1*							6.2	7.6*	6.8
-6.0					7.1*	7.1*							6.5*	6.5*	4.9	

↕ Height ↔ Can be slewed through 360° In longitudinal position of undercarriage Max. reach * Limited by hydr. capacity

The load values are quoted in tons (t) at stick end (without bucket), and may be swung 360° on firm and even ground. Adjacent values are valid for the undercarriage when in the longitudinal position. Capacities are valid for 600 mm wide track pads. Indicated loads are based on ISO 10567 standard and do not exceed 75% of tipping or 87% of hydraulic capacity (indicated via *). Without bucket cylinder, link and lever the lift capacities will increase by 410 kg. Lifting capacity of the excavator is limited by machine stability and hydraulic capacity.

According to European Standard, EN 474-5: In the European Union excavators have to be equipped with an overload warning device, a load diagram and automatic safety check valves on hoist cylinders and stick cylinder(s), when they are used for lifting operations which require the use of lifting accessories.

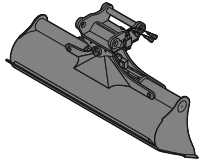
Available Attachments



Rigid Ditch Cleaning Bucket

GRL 100, for mounting to quick coupler SWA 66

Cutting width	mm	2,000	2,400	2,400
Capacity	m ³	0.70	0.85	1.25
Weight	kg	546	635	685



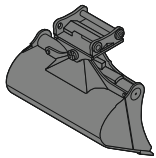
Tiltable Ditch Cleaning Bucket

GRL 100, 2 x 50° tiltable, for direct mounting

Cutting width	mm	2,000	2,000	2,200	2,400	2,400
Capacity	m ³	1.20	1.45	1.65	0.85	1.45
Weight	kg	1,520	1,600	1,680	1,475	1,620

GRL 100, 2 x 50° tiltable, for mounting to quick coupler SWA 66

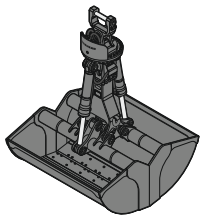
Cutting width	mm	2,000	2,000	2,200	2,400	2,400
Capacity	m ³	1.20	1.45	1.65	0.85	1.45
Weight	kg	1,520	1,600	1,680	1,475	1,620



Tilt Bucket

SL 100, 2 x 50° tiltable, for mounting to quick coupler SWA 66

Cutting width	mm	1,600	1,600	1,700	1,800
Capacity	m ³	1.45	1.75	1.85	1.60
Weight	kg	1,520	1,635	1,695	1,620
HD-version				X	



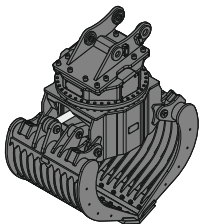
Clamshells

GM 20C, earthmoving shell, for mounting to quick coupler SWA 48

Cutting width	mm	600	800	1,000	1,200
Capacity	m ³	0.45	0.60	0.75	0.90
Weight	kg	1,080	1,130	1,205	1,270

GMZ 80, earthmoving shell, for mounting to quick coupler SWA 66

Cutting width	mm	1,200	1,400		
Capacity	m ³	1.40	1.60		
Weight	kg	2,376	2,486		



Sorting Grab

		perforated			ribbed			closed			stone tong
SG 30, for direct mounting											
Cutting width	mm	1,000	1,200	1,400	1,000	1,200	1,400	1,000	1,200	1,400	1,020
Capacity	m ³	0.85	1.00	1.15	0.75	0.90	1.05	0.85	1.00	1.15	0.85
Weight	kg	1,700	1,570	1,850	1,775	1,885	1,990	1,730	1,810	1,890	1,765
SG 30, for mounting to quick coupler SWA 48											
Cutting width	mm	1,000	1,200	1,400	1,000	1,200	1,400	1,000	1,200	1,400	1,020
Capacity	m ³	0.85	1.00	1.15	0.75	0.90	1.05	0.85	1.00	1.15	0.85
Weight	kg	1,700	1,570	1,850	1,775	1,885	1,990	1,730	1,810	1,890	1,765
SG 40, for mounting to quick coupler SWA 48 and SWA 66											
Cutting width	mm	1,100	1,300		1,100	1,300					
Capacity	m ³	1.30	1.60		1.10	1.40					
Weight	kg	2,230	2,800		2,320	2,900					

Serial Equipment

Undercarriage

- Lashing eyes
- Sprocket with dirt ejector
- Track and carrier rollers, sealed and lifetime-lubricated
- Tracks, sealed and greased

Uppercarriage

- Access platforms without protruding parts
- Anti-skid surfaces
- Automatic swing brake lock
- Engine coolant level, visible from the cab
- Engine hood with gas spring opening
- Filters accessible from ground level
- Handrails
- Hydraulic oil level, visible from ground level
- Lockable service doors
- Lockable storage and accessories compartment
- Main switch, electric, with timer
- Main switch, manual, lockable
- Protection grid on radiator fan
- Sound insulation
- Swing drive gearbox oil level, visible from the cab
- Swing-out radiators
- Tool set including storage case
- Windshield washer fluid tank, accessible from ground level

Hydraulic System

- Dedicated swing circuit
- Filter with integrated fine filters
- Hydraulic pressure measuring ports
- Liebherr Positive Control system with 2 independent circuits
- Magnetic rod
- Pressure accumulator for controlled lowering of equipment with engine turned off

Engine

- Air filter with automatic dust ejector
- Automatic engine idling / speed increase, controlled via joystick sensors
- Common-Rail injection system
- Fixed geometry turbocharger
- Fuel fine filter
- Fuel pre-filter and water separator
- Fuel priming pump
- Intercooler
- Power Pack non-regulated countries (for select markets)
- Stepless adjustable engine speed

Operator's Cab

- 2" seat belt with retractor
- 7" multifunction colour touchscreen
- Air conditioning, automatic, tri-zone, controlled via display
- Armrests adjustable in width, height and inclination
- Bottle holder
- Cab air filters housing, accessible from ground level
- Cab door sliding windows
- Cigarette lighter
- Coat hook
- Electric socket in cabin (24 V)
- Emergency hammer
- Engine oil level on touchscreen
- Footrest
- Fuel consumption on touchscreen
- Fuel level on touchscreen
- Hydraulic oil level on touchscreen
- Interior lighting
- Laminated right hand side window
- Laminated roof window
- LiDAT Plus (Liebherr data transfer system) *
- Mechanical hour meters, visible from ground level
- Mobile phone storage net
- Movement priority between swing and boom, adjustable via touchscreen
- Movement priority for stick-in, adjustable via touchscreen
- Rain hood over front window opening
- Rearview mirror
- Rear window emergency exit
- Retractable laminated two-piece windscreen
- Roll-down sun blinds for windscreen and roof window
- Rubber floor mat, fixed on floor and removable
- Shortcut button on joystick configurable
- Storage nets
- Storage spaces
- Swing braking torque adjustable via touchscreen
- Tilttable console left
- Tinted windows
- Visco-elastic damping
- Windscreen wiper and washer
- Work mode selector

Equipment

- Anti-drift system boom cylinders
- Anti-drift system stick cylinder
- Boom cylinders regeneration
- Pivot points made of cast steel
- SAE split flanges on high pressure lines
- Stick cylinder regeneration

* optionally extendable after one year

Equipment Standard/Option

Undercarriage

Chain guide 1 piece	•
Chain guide 2 pieces	+
Chain guide 3 pieces	+
Cover and base plate for undercarriage centre section	•
Reinforced cover and base plate for undercarriage centre section	+
Steps	•
Steps wide	+
Track pads triple grouser 600 mm	•
Track pads triple grouser 700/800/900 mm	+
Undercarriage LC	•

Uppercarriage

Air pre-filter with cyclonical dust trap	+
Air pre-filter with oil bath dust trap	+
Centralised lubrication system (automatic)	+
Centralised lubrication system (manual)	•
Counterweight heavy 6,2 t	+
Counterweight standard 5.1 t	•
Front right rearview mirrors	+
Fuel anti-theft protection	+
Headlight on uppercarriage, front right, LED, 1 piece, protection included	+ ¹⁾
Headlight on uppercarriage, front right, LED+, 1 piece, protection included	+ ¹⁾
Headlight on uppercarriage, lateral left, LED+, 1 piece	+ ¹⁾
Headlight on uppercarriage, lateral right, LED+, 1 piece	+ ¹⁾
Headlights on uppercarriage, rear, LED+, 2 pieces	+ ¹⁾
Lockable fuel tank cap	•
Lockable fuel tank cap with padlock	+
Lockable storage box	+
Pre-heating system for fuel	+
Rearview mirror on counterweight	+
Safe uppercarriage side access platform	+
Tank refilling pump fuel	+

Hydraulic System

Liebherr hydraulic oil	•
Liebherr hydraulic oil, adapted for extreme climate conditions	+
Liebherr hydraulic oil, biodegradable	+

Operator's Cab

Acoustic travel alarm deactivatable	+
Auxiliary heater programmable	+
Dark tinted windows	+
Electric socket in cabin (12 V)	+
Emergency stop in cab	+
FGPS front guard	+
FGPS front guard tiltable	+
Filter for hydraulic hammer return flow	+
FOPS top guard	+
Handrests elevated for joysticks	+
Headlights on cab, front, LED, 2 pieces	• ¹⁾
Headlights on cab, front, LED+, 2 pieces	+ ¹⁾
High pressure circuit with Tool Control (20 attachment adjustments on display)	+
Luminosity control (LED+ headlights)	+ ¹⁾
Medium pressure circuit	+
Mini-joysticks proportional	+
Operator seat Comfort	+
Operator seat Standard	•
Overload warning system	+
Radio Comfort	+
Radio pre-installation	•
Rear view monitoring camera	•
Right hand side view monitoring camera	•
Roof window protection grid	+
ROPS safety cab structure (ISO 12117-2)	+
Rotating beacon on cabin, LED, 1 piece	+
Sun visor	+
Windscreen bottom protection grid	+

Equipment

Floating boom	+
Headlight on boom, right, LED, 1 piece	• ¹⁾
Headlight on boom, right, LED+, 1 piece	+ ¹⁾
Mono boom 6.20 m	•
Pipe fracture safety valve for stick cylinder	+
Pipe fracture safety valves for boom cylinders	+
Quick coupler SWA 66 hydraulic	+
Quick coupler SWA 66 mechanical	+
Stick 2.50 m	+
Stick 2.80 m	+
Stick 3.20 m	+
Stick 3.70 m	+
Stick bottom protection	+

• = Standard, + = Option

¹⁾ Equipment not individually available, but only as predefined lighting packages
Non-exhaustive list, please contact us for further information.

Options and/or special equipments, supplied by vendors other than Liebherr, are only to be installed with the knowledge and approval of Liebherr in order to retain warranty.

Notes

The Liebherr Group of Companies



Wide Product Range

The Liebherr Group is one of the largest construction equipment manufacturers in the world. Liebherr's high-value products and services enjoy a high reputation in many other fields. The wide range includes domestic appliances, aerospace and transportation systems, machine tools and maritime cranes.

Exceptional Customer Benefit

Every product line provides a complete range of models in many different versions. With both their technical excellence and acknowledged quality, Liebherr products offer a maximum of customer benefits in practical applications.

State-of-the-art Technology

To provide consistent, top quality products, Liebherr attaches great importance to each product area, its components and core technologies. Important modules and components are developed and manufactured in-house, for instance the entire drive and control technology for construction equipment.

Worldwide and Independent

Hans Liebherr founded the Liebherr family company in 1949. Since then, the family business has steadily grown to a group of more than 130 companies with more than 46,000 employees located on all continents. The corporate headquarters of the Group is Liebherr-International AG in Bulle, Switzerland. The Liebherr family is the sole owner of the company.

www.liebherr.com

Liebherr-France SAS

2 avenue Joseph Rey, B.P. 90287, FR-68005 Colmar Cedex
☎ +33 389 21 30 30, Fax +33 389 21 37 93
www.liebherr.com, E-Mail: info.lfr@liebherr.com
www.facebook.com/LiebherrConstruction