

336F XE Hydraulic Excavator Specifications

Engine

Engine Model	Cat C9.3 ACERT	
Net Power – SAE J1349	228 kW	306 hp
Gross Power – SAE J1995	238 kW	319 hp
Bore	115 mm	4.53 in
Stroke	149 mm	5.87 in
Displacement	9.3 L	568 in ³

Weights

Minimum Operating Weight	37 100 kg	81,800 lb
Maximum Operating Weight	40 300 kg	88,800 lb

Hydraulic System

Main System – Maximum Flow (Total)	570 L/min	151 gal/min
Swing System – Maximum Flow	276 L/min	73 gal/min
Maximum Pressure – Equipment		
Heavy Lift	37 000 kPa	5,366 psi
Normal	35 000 kPa	5,076 psi
Maximum Pressure – Travel	35 000 kPa	5,076 psi
Maximum Pressure – Swing	31 500 kPa	4,569 psi
Pilot System – Maximum Flow	28 L/min	7 gal/min
Pilot System – Maximum Pressure	4100 kPa	595 psi
Boom Cylinder – Bore	150 mm	5.9 in
Boom Cylinder – Stroke	1440 mm	56.7 in
Stick Cylinder – Bore	170 mm	6.7 in
Stick Cylinder – Stroke	1738 mm	68.4 in
DB Bucket Cylinder – Bore	150 mm	5.9 in
DB Bucket Cylinder – Stroke	1151 mm	45.3 in

Drive

Maximum Travel Speed	4.8 km/h	3 mph
Maximum Drawbar Pull	294 kN	66,139 lbf

Swing Mechanism

Swing Speed	8.7 rpm	
Swing Torque	109 kN·m	80,144 lbf-ft

Service Refill Capacities

Fuel Tank Capacity	620 L	164 gal
Cooling System	43 L	11 gal
Engine Oil (with filter)	32 L	8 gal
Swing Drive (each)	19 L	5 gal
Final Drive (each)	8 L	2 gal
Hydraulic System (including tank)	380 L	100 gal
Hydraulic Tank	175 L	46 gal
Diesel Exhaust Fluid (DEF) Tank*	41 L	11 gal

*DEF must meet ISO 22241.

Sound Performance

Operator Noise – ISO 6396	73 dB(A)
Spectator Noise – ISO 6395	105 dB(A)

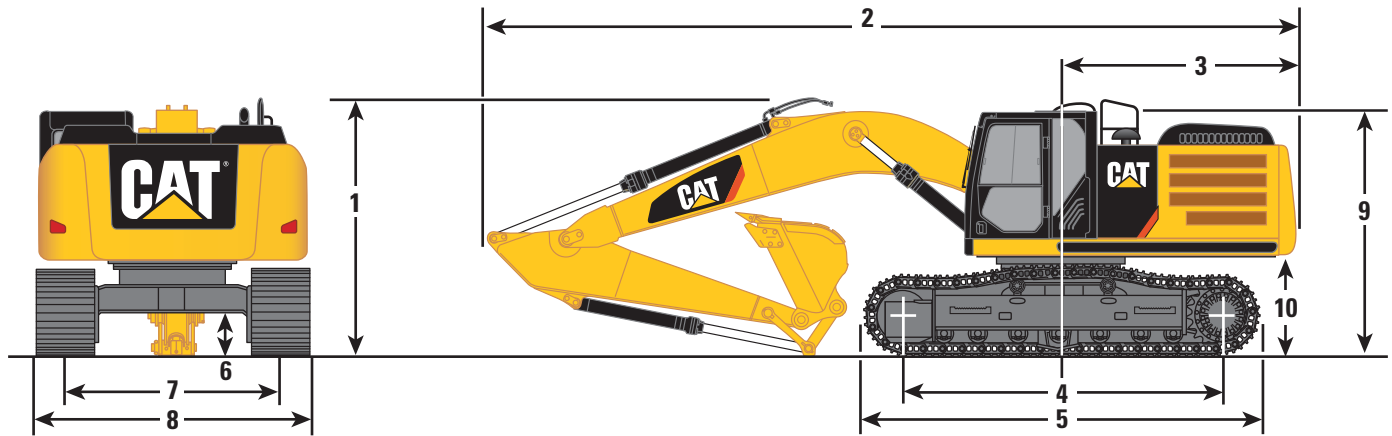
Standards

Brakes	ISO 10265 2008
Cab/FOGS	ISO 10262 1998
Cab/ROPS	ISO 12117 2008

336F XE Hydraulic Excavator Specifications

Dimensions

All dimensions are approximate.

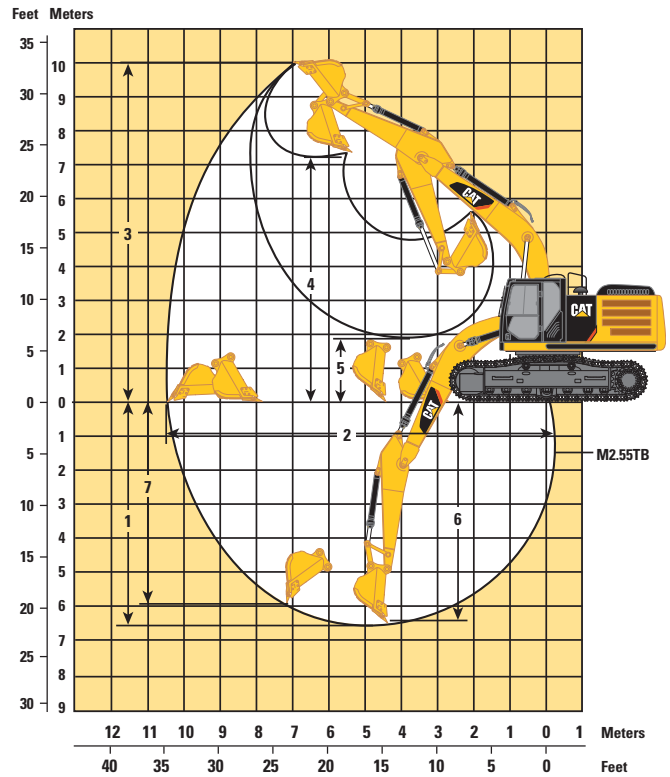
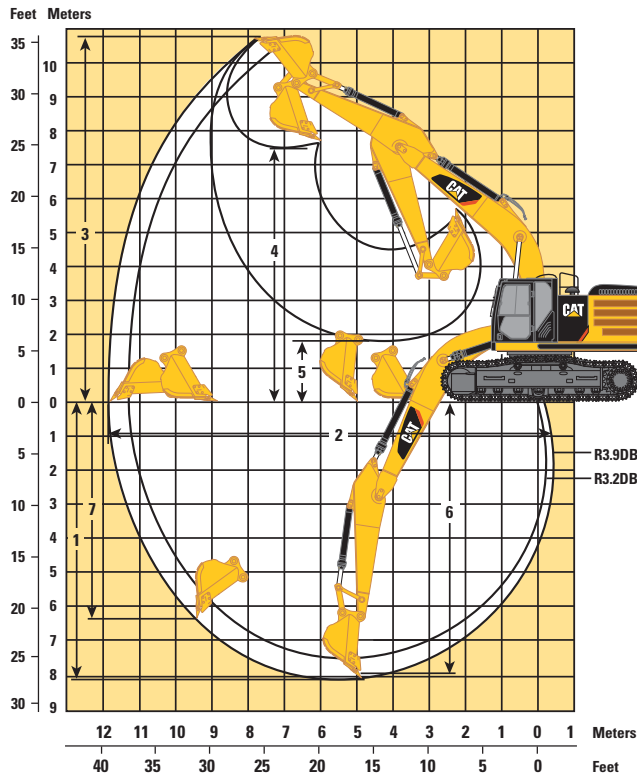


Boom Options		HD Reach Boom 6.50 m (21'4")		Mass Boom 6.18 m (20'3")			
Stick Options		R3.9DB	12'10"	R3.2DB	10'6"	M2.55TB	8'4"
1 Shipping Height including Shoe Lug Height	3660 mm	12'0"	3510 mm	11'6"	3600 mm	11'10"	
2 Shipping Length	11 200 mm	36'9"	11 190 mm	36'9"	10 920 mm	35'10"	
3 Tail Swing Radius	3490 mm	11'5"	3490 mm	11'5"	3490 mm	11'5"	
4 Length to Center of Rollers							
Long Undercarriage	4040 mm	13'3"	4040 mm	13'3"	4040 mm	13'3"	
5 Track Length							
Long Undercarriage	5030 mm	16'6"	5030 mm	16'6"	5030 mm	16'6"	
6 Ground Clearance including Shoe Lug Height	510 mm	1'8"	510 mm	1'8"	510 mm	1'8"	
Ground Clearance without Shoe Lug Height	480 mm	1'7"	480 mm	1'7"	480 mm	1'7"	
7 Track Gauge							
Long Undercarriage	2590 mm	8'6"	2590 mm	8'6"	2590 mm	8'6"	
8 Transport Width							
Long Undercarriage – 800 mm (32") Triple Grouser Shoes	3390 mm	11'1"	3390 mm	11'1"	3390 mm	11'1"	
Long Undercarriage – 850 mm (34") Triple Grouser Shoes	3440 mm	11'3"	3440 mm	11'3"	3440 mm	11'3"	
9 Cab Height	3150 mm	10'4"	3150 mm	10'4"	3150 mm	10'4"	
Cab Height with Top Guard	3360 mm	11'0"	3360 mm	11'0"	3360 mm	11'0"	
10 Counterweight Clearance without Shoe Lug Height	1220 mm	4'0"	1220 mm	4'0"	1220 mm	4'0"	
Buckets							
Type		DB1536GP-C		TB1676SD			
Part Number		342-2192		339-3748			
Capacity – SAE		2.28 m ³	2.98 yd ³	2.28 m ³	2.98 yd ³	2.41 m ³	3.15 yd ³
Tip Radius		1753 mm	5'9"	1753 mm	5'9"	1895 mm	6'2"

336F XE Hydraulic Excavator Specifications

Working Ranges

All dimensions are approximate.



Boom Options

HD Reach Boom 6.50 m (21'4")

Mass Boom 6.18 m (20'3")

Stick Options

	R3.9DB	12'10"	R3.2DB	10'6"	M2.55TB	8'4"
1 Maximum Digging Depth	8190 mm	26'10"	7490 mm	24'7"	6650 mm	21'10"
2 Maximum Reach at Ground Level	11 720 mm	38'5"	11 020 mm	36'2"	10 260 mm	33'8"
3 Maximum Cutting Height	10 740 mm	35'3"	10 320 mm	33'10"	9970 mm	32'9"
4 Maximum Loading Height	7500 mm	24'7"	7110 mm	23'4"	6620 mm	21'9"
5 Minimum Loading Height	1910 mm	6'3"	2610 mm	8'7"	2920 mm	9'7"
6 Maximum Depth Cut for 2440 mm (8'0") Level Bottom	7610 mm	25'0"	6820 mm	22'5"	5810 mm	19'1"
7 Maximum Vertical Wall Digging Depth	6310 mm	20'8"	5500 mm	18'1"	4450 mm	14'7"

Buckets

Type	DB1536GP-C		DB1536GP-C		TB1676SD	
Part Number	342-2192		342-2192		339-3748	
Capacity – SAE	2.28 m ³	2.98 yd ³	2.28 m ³	2.98 yd ³	2.41 m ³	3.15 yd ³
Tip Radius	1753 mm	5'9"	1753 mm	5'9"	1895 mm	6'2"

336F XE Hydraulic Excavator Specifications

Major Component Weights*

Lower Structure (without counterweight and track)		
Long Undercarriage	8900 kg	19,600 lb
Upper Structure (without front linkage) with 5.1 mt (5.6 t) Counterweight	10 700 kg	23,600 lb
Upper Structure (without front linkage) with 6.1 mt (6.7 t) Counterweight	11 200 kg	24,700 lb
Counterweight 5.1 mt (5.6 t)	5100 kg	11,200 lb
Counterweight 6.1 mt (6.7 t)	6100 kg	13,400 lb
Boom (includes lines, pins and stick cylinder)		
HD Reach Boom – 6.50 m (21'4")	4100 kg	9,000 lb
Mass Boom – 6.18 m (20'3")	4200 kg	9,300 lb
Stick (includes lines, pins and bucket cylinder)		
R3.9DB HD (12'10")	1900 kg	4,200 lb
R3.2DB HD (10'6")	1800 kg	4,000 lb
M2.55TB (8'4")	2100 kg	4,600 lb
Track Shoe (Long)		
800 mm (32") Triple Grouser	5100 kg	11,200 lb
850 mm (34") Triple Grouser	5400 kg	11,900 lb
Quick Coupler	600 kg	1,300 lb
Bucket		
DB1536GP-C 342-2192 SAE 2.28 m ³ (2.98 yd ³)	1500 kg	3,300 lb

*Base machine includes 75 kg (165 lb) operator weight and 90% fuel weight, and undercarriage with center guard.

Operating Weights and Ground Pressures

	800 mm (32") Triple Grouser Shoes				850 mm (34") Triple Grouser Shoes			
	kg	lb	kPa	psi	kg	lb	kPa	psi
Standard Counterweight – 5.1 mt (5.6 t) – Long Undercarriage								
HD Reach Boom – 6.50 m (21'4")								
R3.9DB HD (12'10")	37 200	82,000	52.0	7.5	37 500	82,700	49.3	7.2
R3.2DB HD (10'6")	37 100	81,800	51.8	7.5	37 400	82,500	49.2	7.1
Mass Boom – 6.18 m (20'3")								
M2.55TB (8'4")	38 400	84,700	53.6	7.8	38 700	85,300	50.9	7.4
Heavy Counterweight – 6.1 mt (6.7 t) – Long Undercarriage								
HD Reach Boom – 6.50 m (21'4")								
R3.9DB HD (12'10")	38 800	85,500	54.2	7.9	39 100	86,200	51.4	7.5
R3.2DB HD (10'6")	38 600	85,100	53.9	7.8	38 900	85,800	51.1	7.4
ES Reach Boom – 6.50 m (21'4")								
R3.9DB ES (12'10")	39 200	86,400	54.8	7.9	39 400	86,900	51.8	7.5
R3.2DB ES (10'6")	38 900	85,800	54.3	7.9	39 200	86,400	51.5	7.5
Mass Boom – 6.18 m (20'3")								
M2.55TB (8'4")	40 000	88,200	55.9	8.1	40 300	88,800	53.0	7.7